

"SUPER HEAVY DUTY" AND FREE MAINTENANCE BATTERY

Flooded battery										
Code	Voltage	Capacity	Cold Cranking	Res.Cap.	Tester	Terminal	Lid	Bottom	Layout	Per pallet
B107C	V	Ah 20h	A (EN)	minutes		conical	X box A	Bottom Holds	positive	8x3
	12	140	950	270 a 25A	950	1 standard	A Flat	B0	Left	

SAFE
POWER TRUCK
SHD

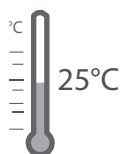


BOX AND LID COLOUR
Gray

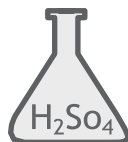
Technical Characteristics



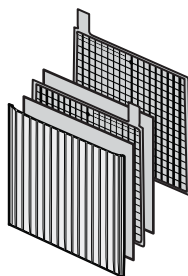
BOX AND LID
PP



TEMPERATURE
All values are referred at 25°C



SULFURIC ACID
Density
1,28 +/- 0,01 g/ml
Approximate volume 11,5 l



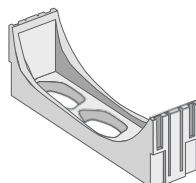
PLATES
Casted grids in Pb/Ca alloy



WEIGHT
carica approssimativo 37,4 Kg



FLAME ARRESTOR
Placed in the lid



ANTI-VIBRATIONS DEVICES
Placed between the lid and the plates they make battery able to exceed the vibration test. (5 times complying to EN50342-1)