

"SUPER HEAVY DUTY" AND FREE MAINTENANCE BATTERY

Flooded battery										
Code	Voltage	Capacity	Cold Cranking	Res.Cap.	Tester	Terminal	Lid	Bottom	Layout	Per pallet
B113C	V	Ah 20h	A (EN)	minutes		conical	X box B	Bottom Holds	positive	7x3
	12	175	1150	360 a 25A	1150	1 standard	B Flat	B0	Left	

**SAFE
POWER TRUCK
SHD**

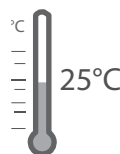


BOX AND LID COLOUR
Gray

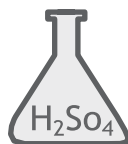
Technical Characteristics



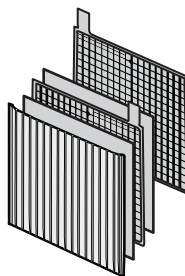
BOX AND LID
PP



TEMPERATURE
All values are referred at 25°C



SULFORIC ACID
Density
1,28 +/- 0,01 g/ml
Approximate volume 12,6 l



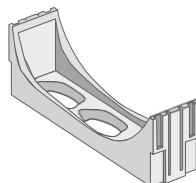
PLATES
Casted grids in Pb/Ca alloy



WEIGHT
carica approssimativo 46.0 Kg



FLAME ARRESTOR
Placed in the lid



ANTI-VIBRATIONS DEVICES
Placed between the lid and the plates they make battery able to exceed the vibration test. (5 times complying to EN50342-1)